

HGP Open Part Number	Schematic Drawing #	Approx Weight (LBS)
HGP0025BW0S0000	30209-S	140
HGP0025BW0C0000	30209	145
HGP0025BW0C1000	30209-PQ	148

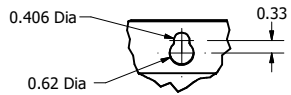
HGP Part Number	HorsePower (HP)	kVar	Harmonic	Voltage (V)	Hz.	Phase
HGP0025BW----	25	6.3	5th	240	60	3

HGP Eclosed Type 1 Part Number	Schematic Drawing #	Approx Weight (LBS)
HGP0025BW1S0000	30209-S	205
HGP0025BW1C0000	30209	208
HGP0025BW1C1000	30209-PQ	213

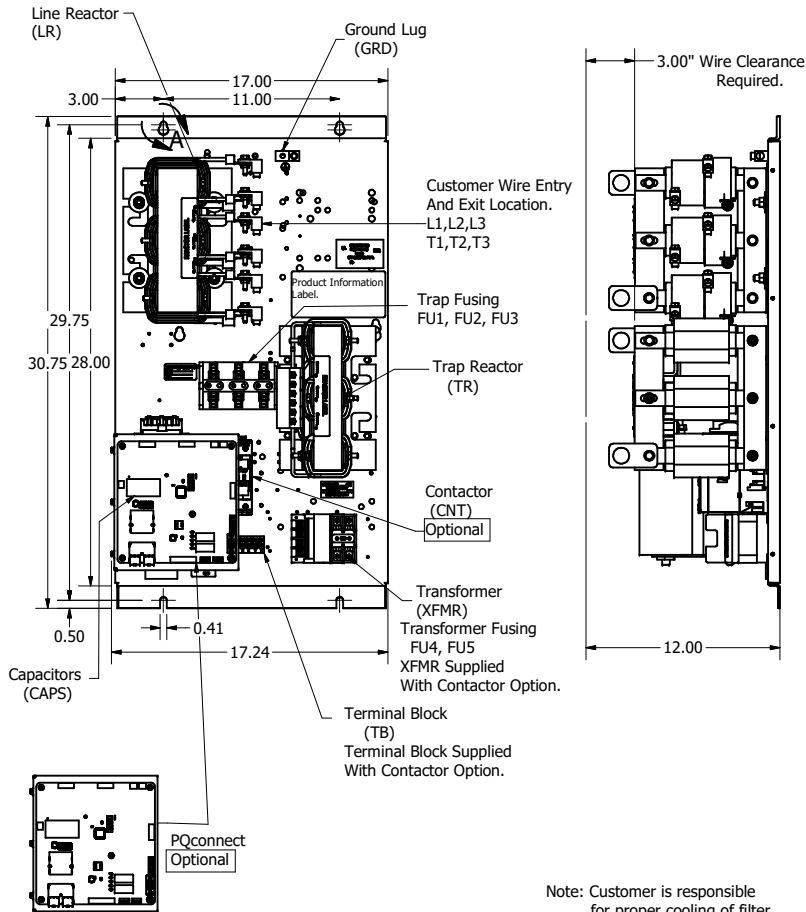
Note: For Torque Information
See IOM Manual.

Customer Connections.
L1, L2, L3, T1, T2, T3
Wire Range: 2/0 AWG to 14AWG.

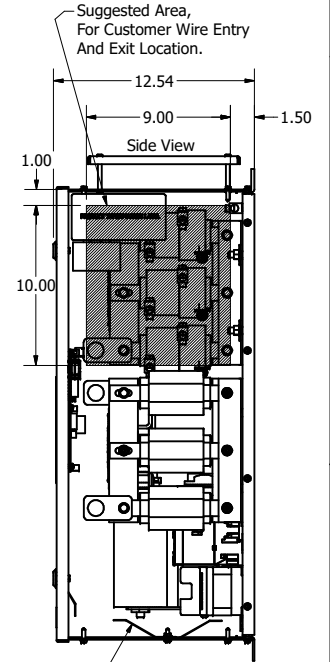
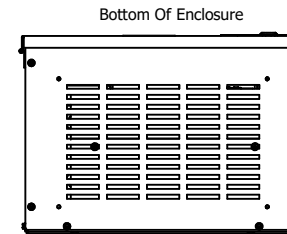
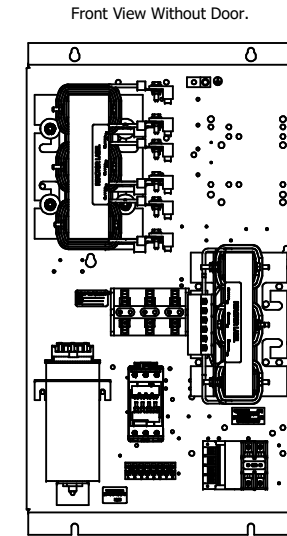
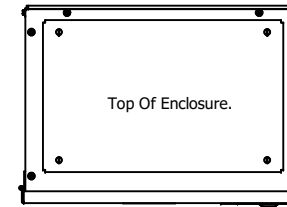
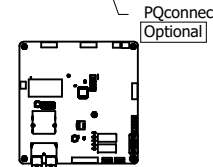
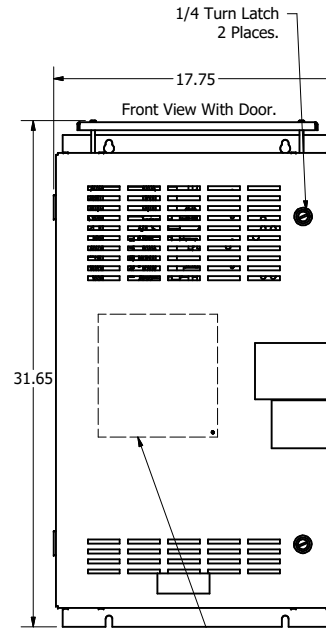
Ground Lug
Wire Range: 2/0 to 14 AWG.



DETAIL A
Keyslot



Note: Customer is responsible
for proper cooling of filter
components on open panels.
Capacitors Maximum Ambient 50°C



HGP0025BW----			
Components	0S0000/1S0000	0C0000/1C0000	0C1000/1C1000
Line Reactor (LR)	X	X	X
Trap Reactor (TR)	X	X	X
Capacitor (Cap)	X	X	X
Trap Fusing, FU1, FU2, FU3	X	X	X
Contactor (CNT)		X	X
Transformer (XFMR)	X (Type 1)	X	X
XFMR Fusing, FU4, FU5	X (Type 1)	X	X
PQConnect Board			X

Customer Is Responsible For Installation to
Meet All National And Local Electrical Codes.

Material(s) Shall be RoHS Compliant

THE INFORMATION AND DESIGNS CONTAINED
IN THIS DRAWING ARE CONFIDENTIAL AND THE
PROPRIETARY PROPERTY OF ALLIED MOTION
TECHNOLOGIES INC. AND ITS SUBSIDIARIES.
NEITHER THIS DESIGN NOR ANY INFORMATION
CONTAINED IN THIS DRAWING MAY BE
REPRODUCED OR DISCLOSED TO OTHERS
WITHOUT THE EXPRESS WRITTEN CONSENT OF
ALLIED MOTION TECHNOLOGIES INC. AND ITS
SUBSIDIARIES.

NO	REVISION	DATE	BY

TOLERANCES (EXCEPT AS NOTED)			
DECIMAL	.XX ± .25	.XXX ± .10	
FRACTIONAL	± 1/32		
ANGULAR	± 1°		

TCL W182N10611 (Rev 1) 11/16/22
 An Allied Motion Company © 2023 TCI, LLC
 Harmonic Guard Passive
 HGP, 25HP, 240/3/60, Open and Type 1
 DESIGNED BY JRN DATE 08/15/18 107835DG
 SCALE 1/6 DRAWN DATE 08/15/18
 SHEET 1 OF 1